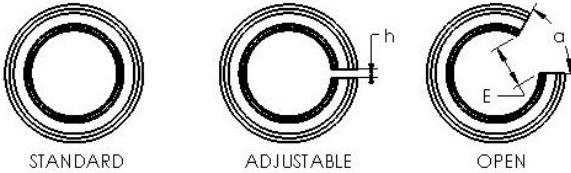
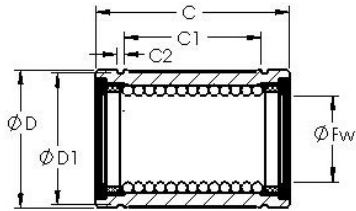




Tolamentos do Brasil Ltda

AST LBB 16 OP linear bearings

Bearing No. LBB 16 OP



Bore Diameter	25,4 mm
Bearing Type	open type
Dynamic Load Rating (Cr)	241
Static Load Rating (Cor)	665
Shaft Dia. (Fw)	1.000
Outside Dia. (D)	1.563
Length (C)	2.250
Groove-to-groove length (C1)	1.753
Groove Width (C2)	0.068
Groove Dia. (D1)	1.490
Open Gap (E)	0.562
Open Gap (a deg.)	60.00
Weight (g)	127.00
Material	52100 chrome steel, or equivalent

LBB 16 OP Bearing 2D drawings and 3D CAD models